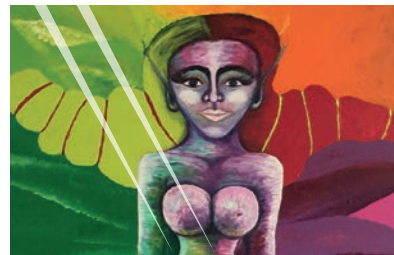


CORBIE HOTEL GEEL



WELCOME

WELCOME

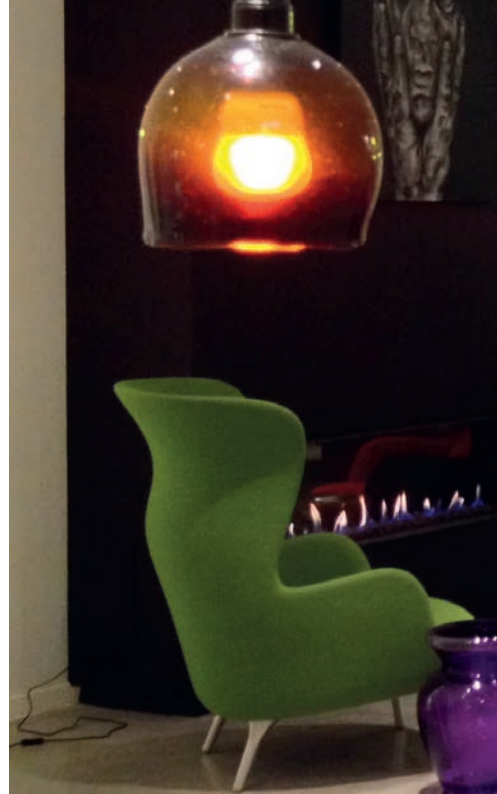
Ceramics of *ParyCorbie*





RECEPTION

The image shows a modern, minimalist reception area. A long, white reception counter with a warm orange LED light strip underneath runs along the right side. Behind the counter, two digital screens display information, and several pendant lights hang from the ceiling. On the left, a vibrant purple modular sofa is positioned on a dark rug, accompanied by two small, round wooden stools with purple tops. A large white vase with dried flowers sits on the floor next to a tall, tripod-style lamp. The background features a hallway with orange walls and a door decorated with a stylized orange figure. A dark grey banner with the word 'RECEPTION' in white capital letters is overlaid in the top right corner, with a white geometric arrow pointing towards the reception counter.







LOBBY



Paintings of *ParyCorbie*





BREAKFAST

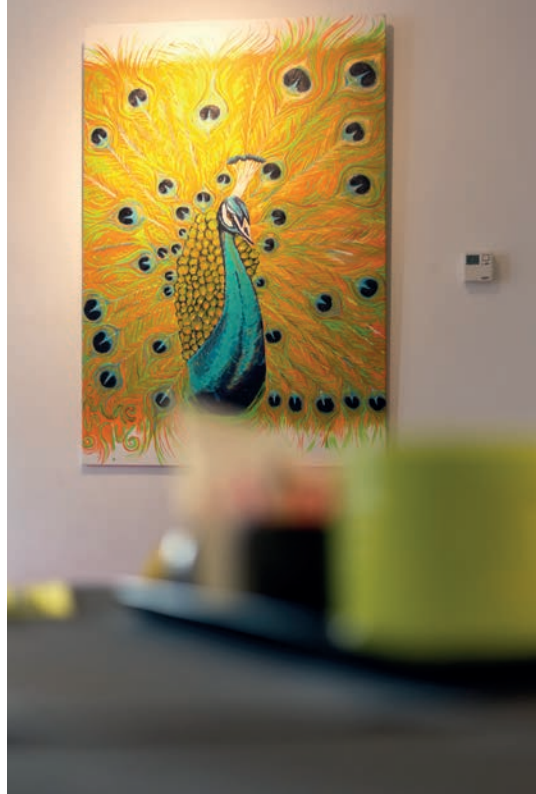
Ceramics of *ParyCorbie*

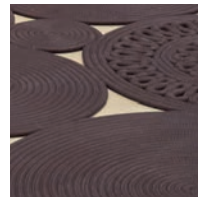
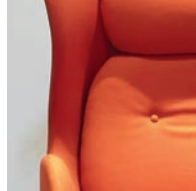








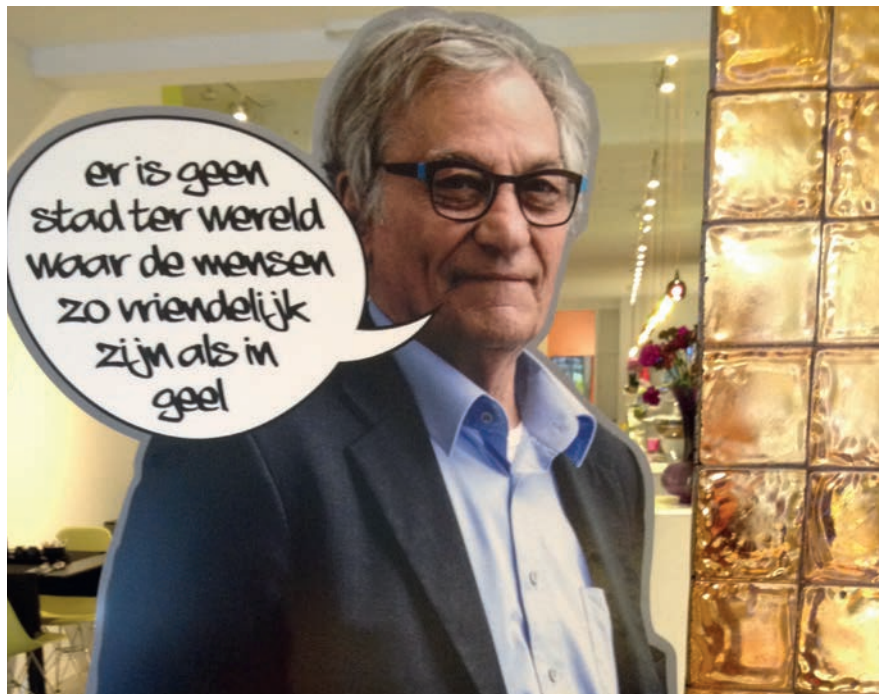




**Ceramics of
Katrin Dekoninck**

January 2014

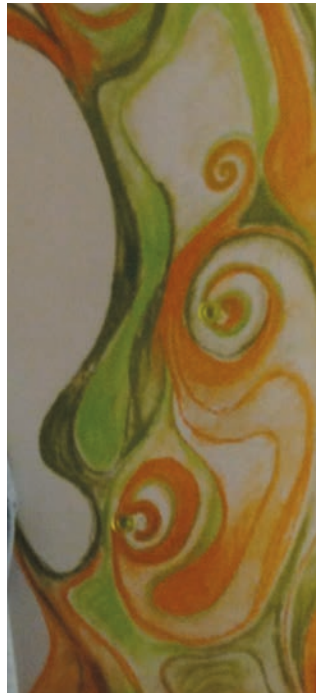


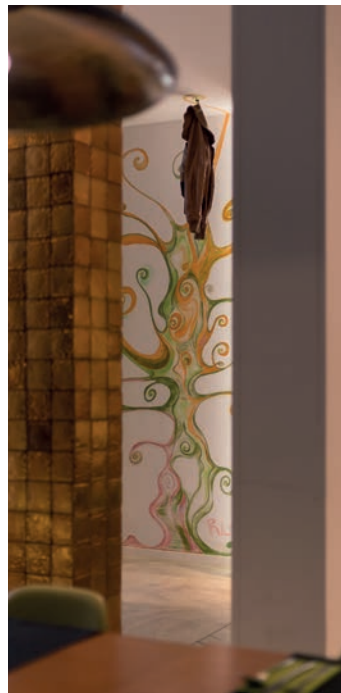
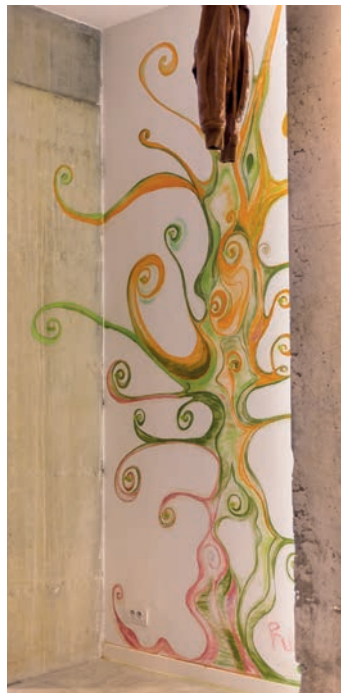
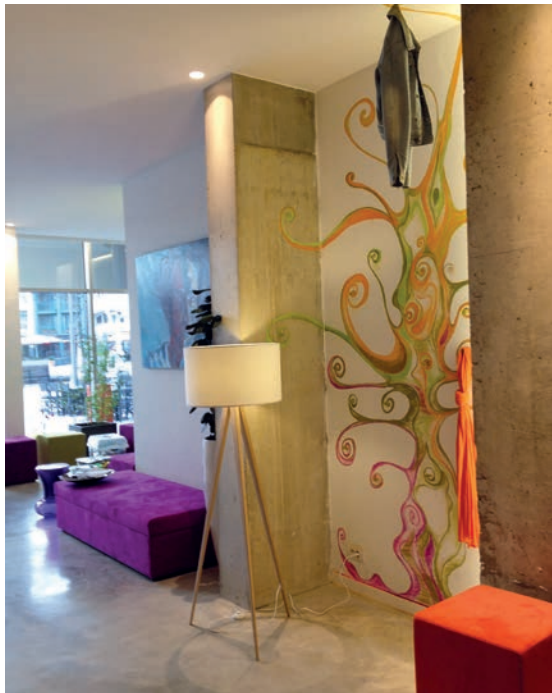


Men's room - Ladies' room
Painted by *ParyCorbie*
November 2017

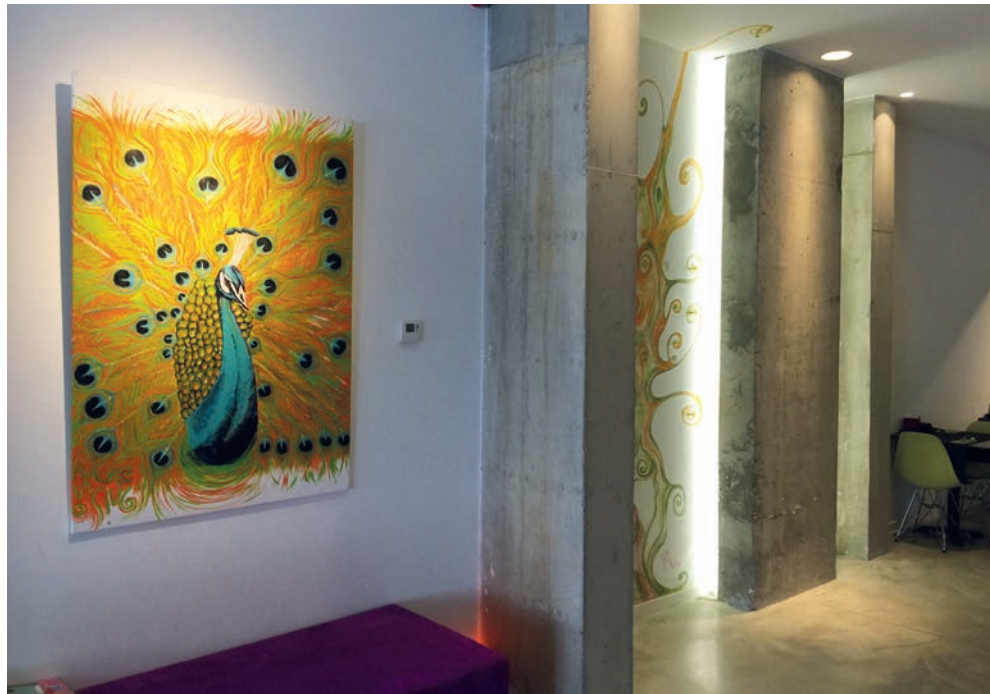








Wall painting transformed
into coat rack
by *ParyCorbie*
February 2014



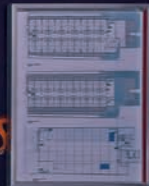


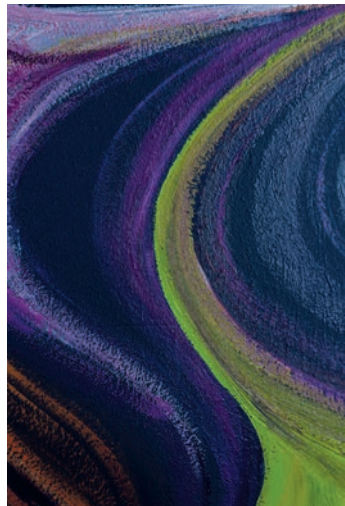
ROOMS

24/7
RECEPTION

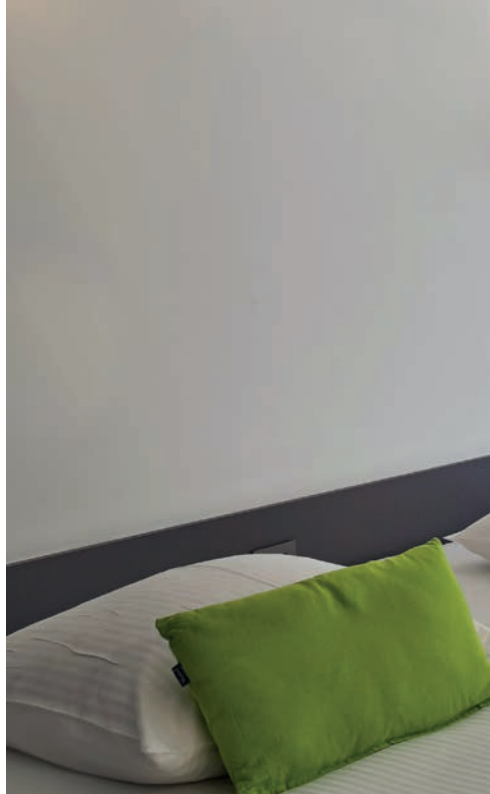
BREAKFAST

MAIN RECEPTION





Signposts painted on the wall
by *ParyCorbie*
April 2014

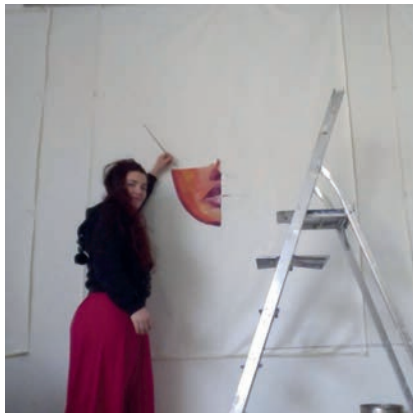


OUR HOTEL ROOMS

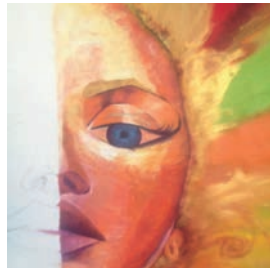
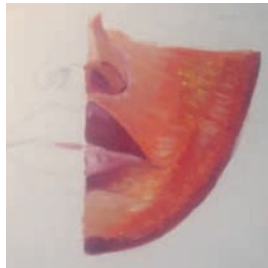


FOUR SEASONS

January 2015
width 140 cm - height 147 cm



by *Pary Corbie*





HAPPY PEACOCK

May 2015
width 98 cm - height 148 cm



by *ParyCorbie*

Personally I have a lot of links with the peacock.

Pauw - Pauwline

India

Art Nouveau

I love colour, the peacock has also many colours.

For me, the peacock is the symbol to unfold yourself, open your mind and your body, feel good, be proud like a peacock.

Happy image

Peacock is spreading his beautiful tail to impress = spreading, flowering, being beautiful, beautiful feeling, feeling good.

Spread your wings

Do your thing

That is how every person should feel!

The peacock is a link between many worlds art nouveau, India & colours, open your wings,
reveal yourself, be who you want to be ...



XANTHISMA : symbols for dreams

January 2016

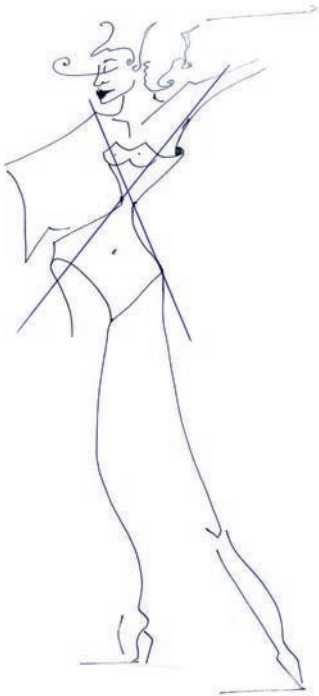
width 110 cm - height 180 cm



The Xanthisma flower



by *ParyCorbie*



X-FIGURE

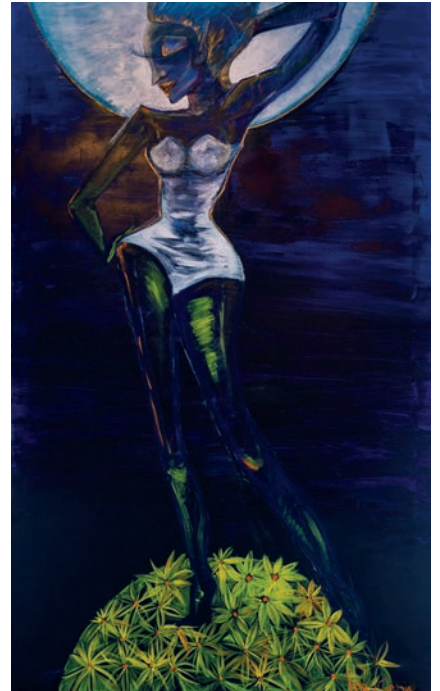
- soft straight
- a waist
- shoulders and hips are equally wide

Light-dark contrast

- creates a strong and professional image

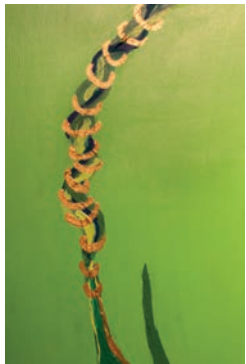
Diamond shape - Long face

- straight shapes
- small forehead and pointy chin
- wide cheekbones

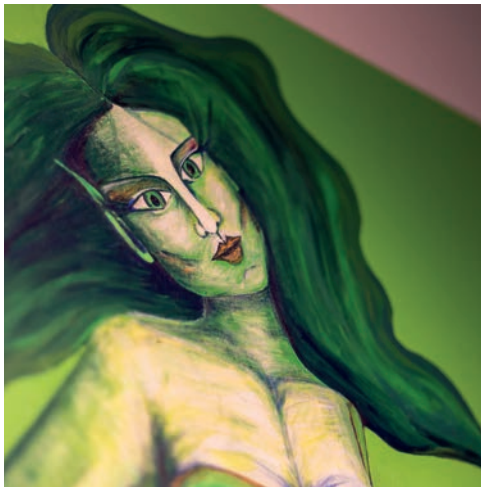


ALOE VERA : Lily of the desert, symbol of happiness

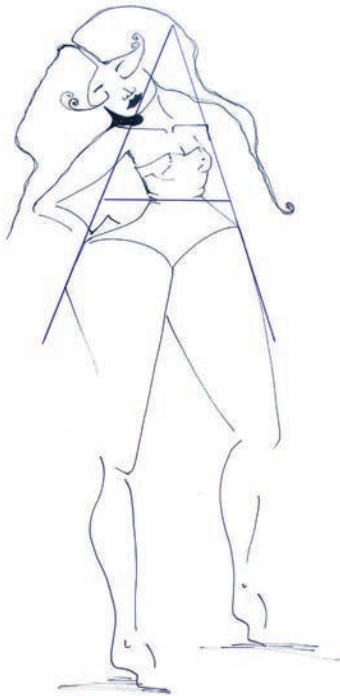
January 2016
width 110 cm - height 180 cm



The Aloe Vera flower



by *ParyCorbie*



A RIGHT-FIGURE

- soft straight
- fine waist
- shoulders are thinner than the hips

Quality contrast = ton-sur-ton

- 1 colour in different colour tones (croma)
- from light to pure or vice versa
- from dark to clean or vice versa

Square short face

- short and wide and straight forms
- sharp angles
- chin, jawlines and forehead is equally wide
- square jawlines and usually a same square hair border
- wide cheekbones
- for men, a square face is the ideal image

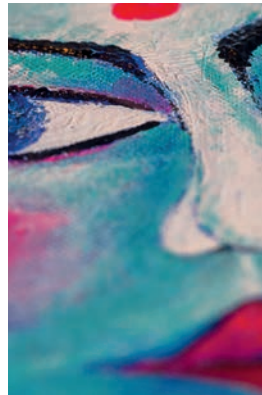


ORCHID : Stands for wealth and elegance, it will make your life pleasant

February 2016
width 110 cm - height 180 cm



The Orchid flower



by *ParyCorbie*



O-FIGURE

- round
- no waist
- round and wider at the top
- nice slim legs

Quantity contrast

- the accent is smaller, but in balance with the other colour because of the brightness

Round - short - face

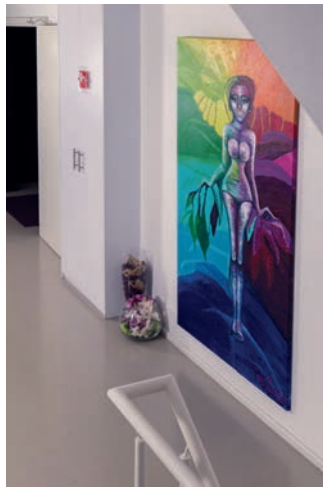
- round shape
- short and broad, round cheeks and full chin
- the cheeks are the widest part
- it looks full, with round chin and round hair border



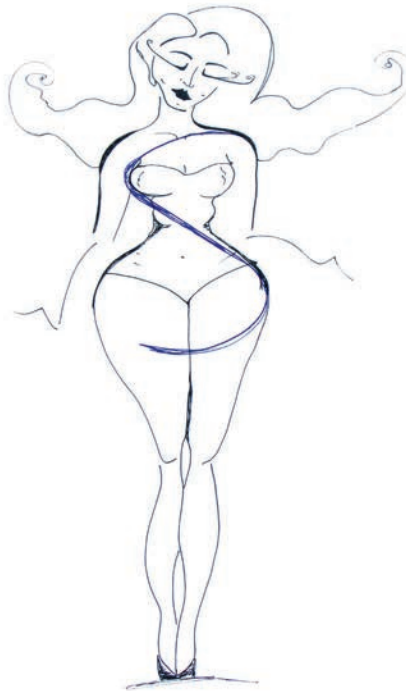
SYRJINJA : First emotion of love

April 2016
width 110 cm - height 180 cm

by *ParyCorbie*



The Syrinja flower



S-FIGURE

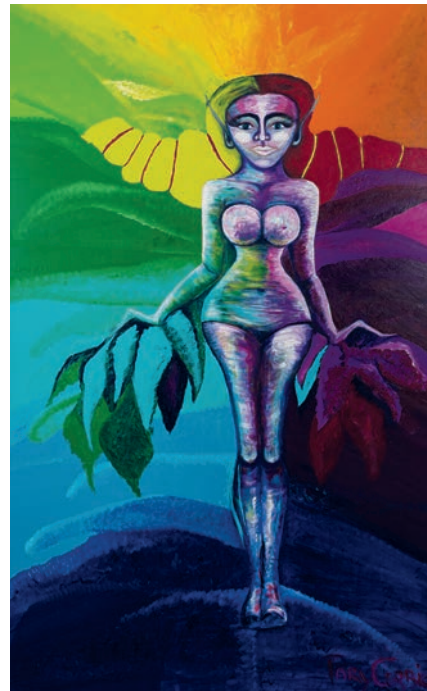
- round
- a waist
- shoulders and hips are equally wide

Analog combinations

- colours that are next to each other on the circle of ITTEN
- varied in colour tones

Heart - Long face

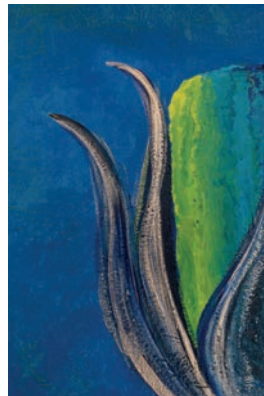
- round shapes
- wide side at the top, round hair border
- wide forehead and wide cheekbones
- long skinny jawlines, pointy chin



HYACINTH : Symbol for peace

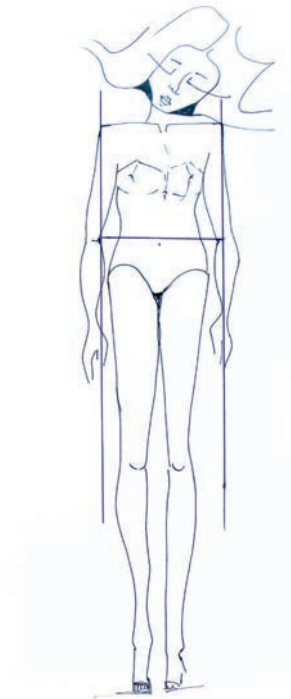
May 2016

width 110 cm - height 180 cm



The Hyacinth flower

by *Pary Corbie*



H-FIGURE

- straight
- no tail
- shoulders and hips and waist are aequally wide

Cool - warm contrast

- cool and warm colours are combined
- cool colours go into the background, warm colours come forward and enlarge
- warm colours require attention and are kind
- cool requires no attention and is not kind

Diamond - Long face

- right forms
- smal forehead and pointed chin
- wide cheekbones

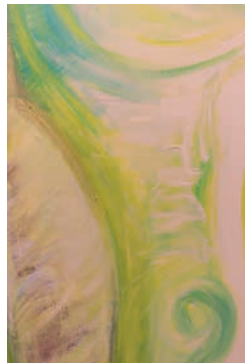


YLANG YLANG : Perfect observation

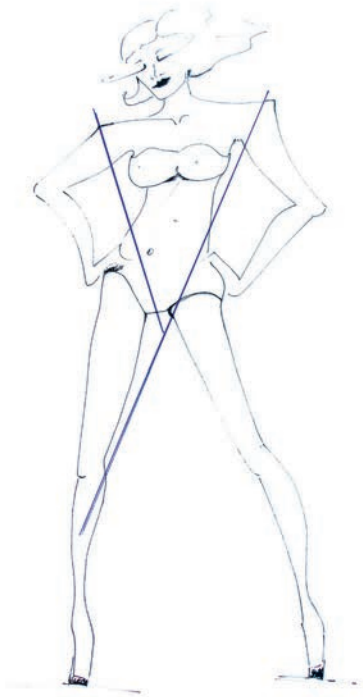
June 2017
width 110 cm - height 180 cm



The Ylang Ylang flower



by *ParyCorbie*



Y-FIGURE

- straight
- new waist
- wide shoulder
- wide bosom
- slim legs

The intention was to apply color against colour contrast
 - haphazard combinations of auctioning colours
 - not the result I wanted, had to be corrected with white

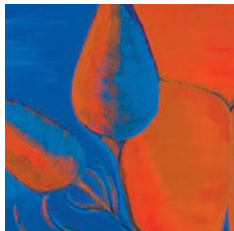
Rectangular - Long face

- right forms
- high forehead
- longer than broad
- forehead cheekbones, jawlines and chin about equally wide
- long and usually quite slim
- right and angular hairline

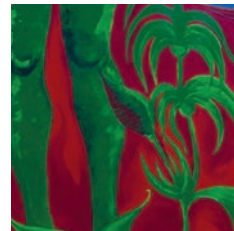
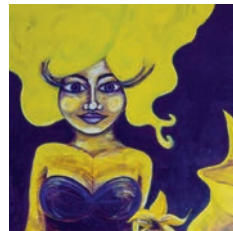
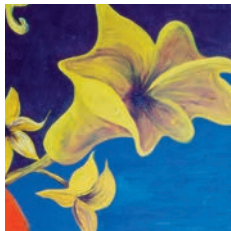


ALLAMANDA VICTORY

July 2017
width 110 cm - height 180 cm



The Allamanda flower



by *ParyCorbie*



A ROUND-FIGURE

- round
- fine waist
- shoulders smaller than hips

Complementary contrast

- combine complementary colours
- orange - blue
- green - red
- yellow - purple

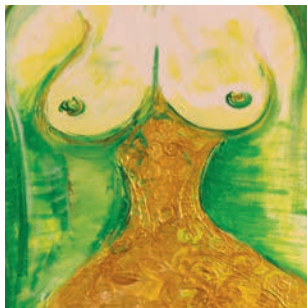
Pear-shaped short face

- small forehead
- wide jawlines that narrows to the cheeks and temple
- wide chin
- right forms



THE 7 FIGURES OF *ParyCorbie*

September 2017
width 180 cm - height 110 cm



**Every woman has a different shape.
Every shape is beautiful and every woman
must feel like a peacock and shine like a flower!**

X-FIGURE = Xanthisma flower
A STRAIGHT-FIGURE = Aloe Vera flower
A ROUND-FIGURE = Allamanda flower
S-FIGURE = Syrinja flower
H-FIGURE = Hyacinth flower
Y-FIGURE = Ylang Ylang flower
O-FIGURE = Orchid flower



SELF-PORTRAIT

Pauline Koch

alias

ParyCorbie

September 2015



This work isn't shown in my hotel,
but ParyCorbie was born and has grown in this project.

ParyCorbie

is my artist's name, name of my products and brandname.
It is a combination of two worlds that melt together.

PARY : (Paris) of freedom, creativity, regardless of how it's done,
open you wings, do you thing, enjoy what you do and
BE WHO YOU ARE, THAT IS HAPPINESS.

CORBIE : strong, security and family love.



Pauline Koch +32 (0)473 53 40 39

